



Connah's Quay Low Carbon Power

Indicative Design – Elevations

Planning Inspectorate Reference: EN010166

Document Reference: EN010166/APP/7.13

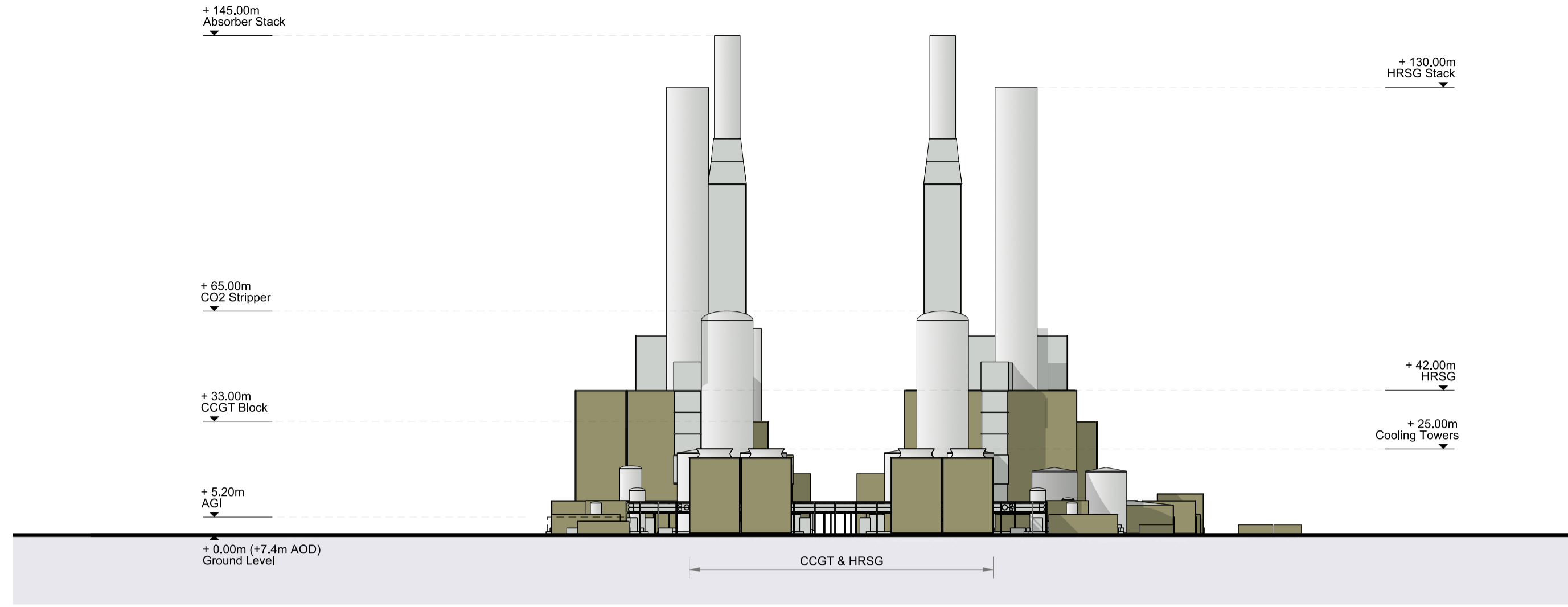
Planning Act 2008 (as amended)

Infrastructure Planning (Applications: Prescribed Forms and Procedure) Regulations

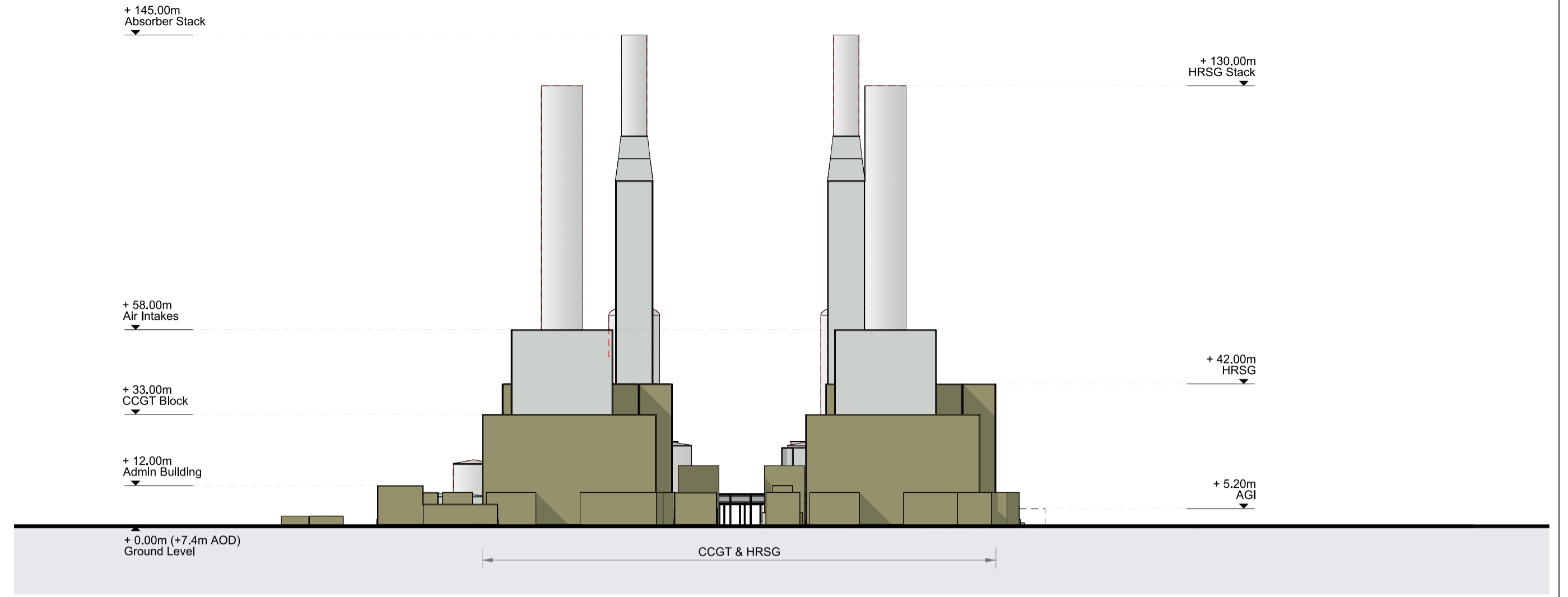
2009 - Regulation 5(2)(o)

Revision 01

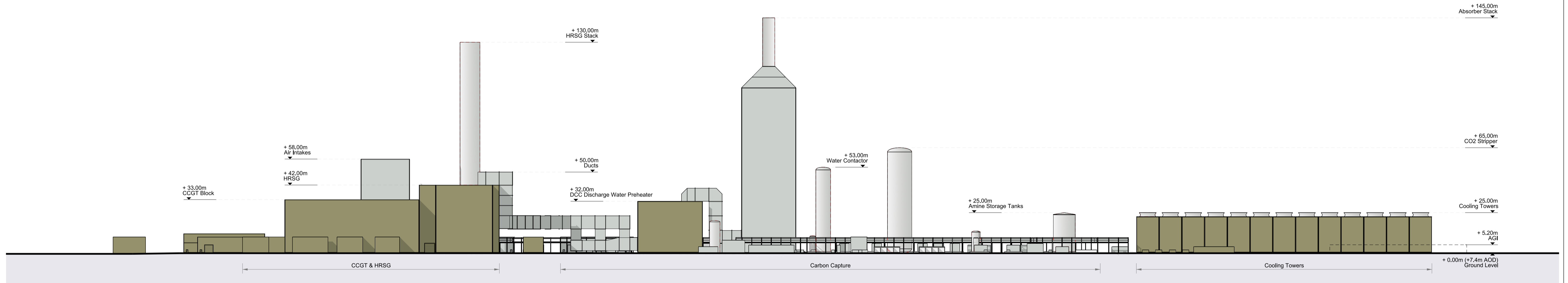
March 2026



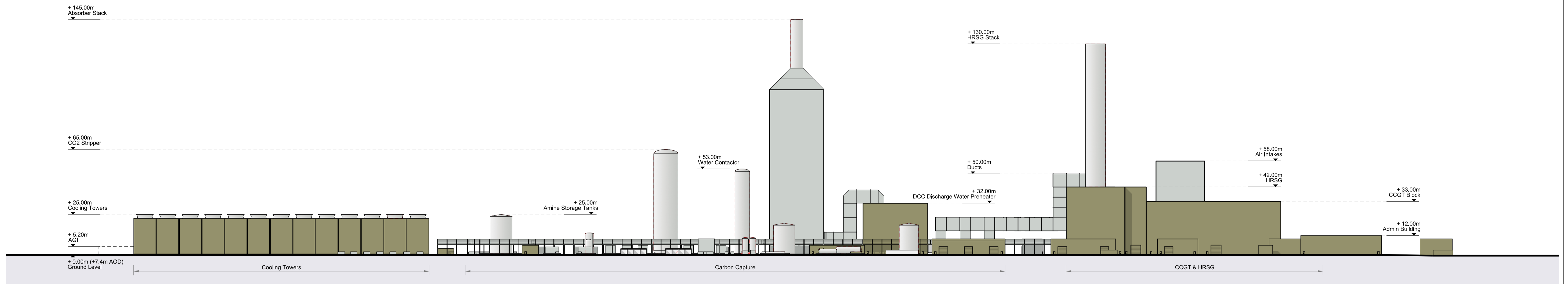
WEST ELEVATION



EAST ELEVATION

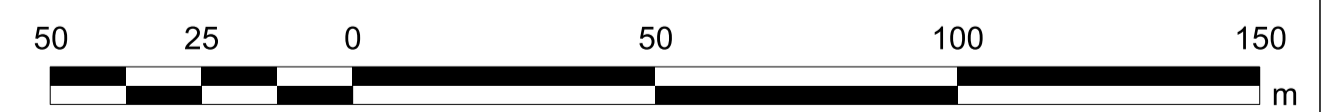


NORTH ELEVATION



SOUTH ELEVATION

1:1,250@A1



© Crown Copyright 2025. All rights reserved. Ordnance Survey Licence AC0000808122



PROJECT
Connah's Quay Low Carbon Power

CONSULTANT
 Garry Stewart Design Associates Ltd
 01 Meadlake Place,
 Thorpe Lea Road,
 Egham, Surrey
 TW20 8HE, United Kingdom
 www.gsd.co.uk

- GENERAL NOTES**
1. ALL DIMENSIONS IN METRES UNLESS STATED OTHERWISE.
 2. DO NOT SCALE FROM THIS DRAWING USE ONLY PRINTED DIMENSIONS.
 3. THE ELEVATIONS AND IDENTIFIED PLANT AS SHOWN ARE INDICATIVE ONLY AND WILL BE SUBJECT TO CHANGE AS PART OF DETAILED DESIGN DEVELOPMENT. ANY CHANGES WILL BE LIMITED TO WITHIN THE ORDER LIMITS AND WILL BE IN COMPLIANCE WITH THE WORKS PLANS (EN010166/APP/2.4), PARAMETER PLANS (EN010166/APP/2.5) AND OTHER APPROPRIATE PLANS OR CONSTRAINTS INCLUDED WITHIN THIS APPLICATION.
 4. ANNOTATED HEIGHTS ARE MEASURED FROM PROPOSED GROUND LEVEL (AGL)

ISSUE/REVISION

I/R	DATE	DESCRIPTION
01	01/03/2026	REVISION 1
00	27/06/2025	FIRST ISSUE

PROJECT NUMBER
 60768754

ISSUE PURPOSE
 DCO Application

DATE
 March 2026

SHEET TITLE
 Indicative / Not for Approval Elevations

LEGISLATION REFERENCE
 APFP Regulations 5(2)(q)

DOCUMENT REFERENCE NUMBER
 EN010166/APP/7.13

This drawing has been prepared for the use of GSDA's client. It may not be used, modified, reproduced or relied upon by third parties, except as agreed by GSDA or as required by law. GSDA accepts no responsibility, and denies any liability whatsoever, to any party that uses or relies on this drawing without GSDA's express written consent. Do not scale this document.